

U. S. Revenues



Proudly made in the U.S.A.

G&K HOBBY PRODUCTS • 2121 Beale Ave, Allboma, PA 16801 •

le No ZGSQUARA

1862 U.S. Revenues 1871



U.S. Rev.

R27



R34



*

R487



R61



R68C



R78



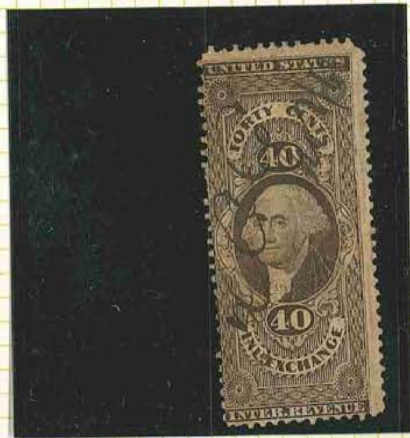
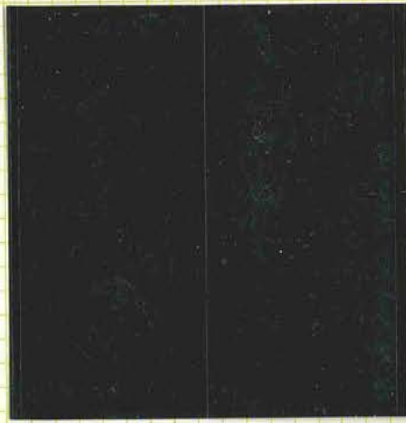
R89



R93



1862 U. S. Revenues 1871



Proudly made in the U.S.A.

G&K HOBBY PRODUCTS • 10271 Skale Ave, Altoona, PA 16601 •

e No ZGSSOUARA

1862 * U. S. Revenues 1871 *



R80c



Handwritten notes: '2 A' and '80c' with a star symbol.

R89c

R82d



Handwritten notes: 'A' and '50c'.

1862 U.S. Revenues 1871

A



POSTAL LETTER SEAL 1872



A



1871 U. S. Reven Documentary 1871



4

* R114cc

10



*



R105cc



R108cc



R140cc



R148cc



R145

U. S. Revenues



U. S. Revenue



X

R 53 C

R 54 C

A



R 92

R 117

UNCENT
100-

R 141 cc



cc

R 134

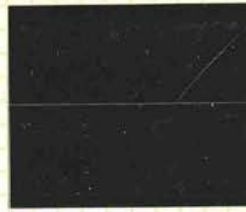
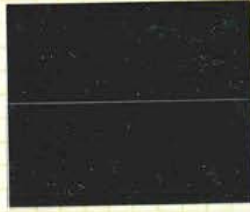
U. S. Revenues



R

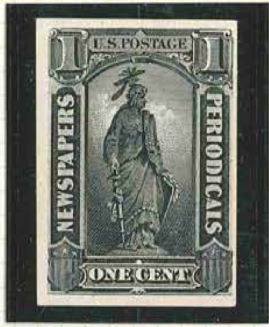


U. S. Revenues



Periodicals

A



A



PR 81 24
15-

10 10-

13 12-

FORGOTTEN



X

U. S. Revenues



Proudly made in the U.S.A.

G&K HOBBY PRODUCTS • 2121 Beale Ave, Allentown, PA 18601 •

No ZGSQUARA

U. S. Revenues



U. S. Revenues



U. S. Revenues



Proudly made in the U.S.A.

G&K HOBBY PRODUCTS • 2121 Beale Ave, Altoona, PA 16601 •

is No ZGSQUARA









U. S. Revenues



Proudly made in the U.S.A.

G&K HOBBY PRODUCTS • 2121 Beale Ave, Allcoona, PA. 16801 •

le No ZGSQUARA

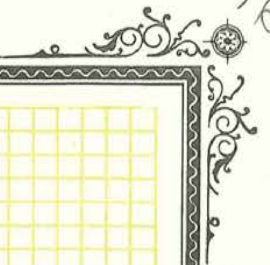
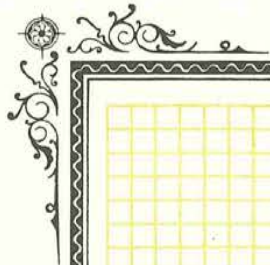
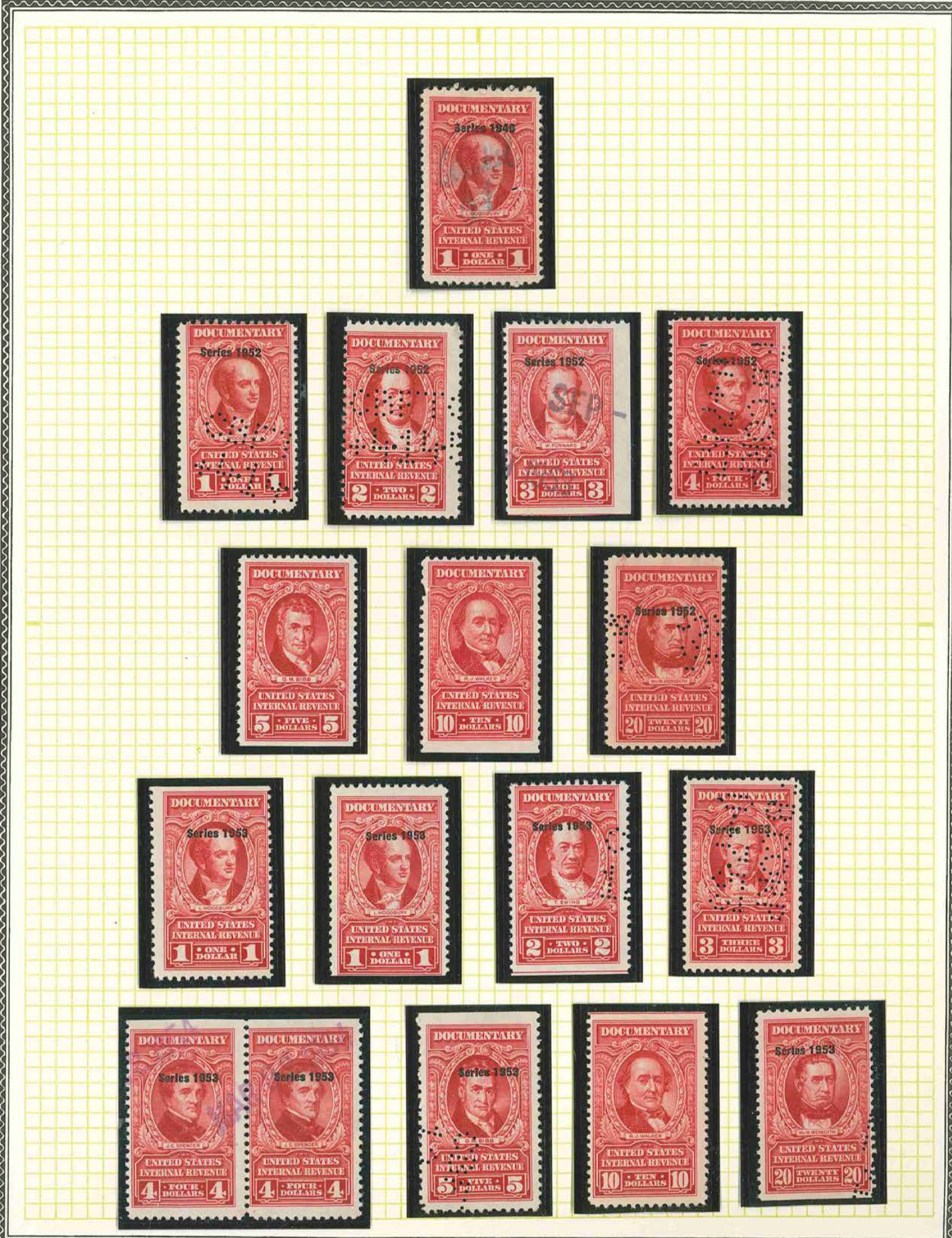
U. S. Revenues



Proudly made in the U.S.A.

G&K HOBBY PRODUCTS • 2121 Beale Ave, Allentown, PA 18601 •

e No ZGSOJARA





Proudly made in the U.S.A.

G&K HOBBY PRODUCTS • 2121 Beale Ave, Albion, PA 16801 •

No ZG5QUARA

1941 U. S. Documentary Series 1952



Error '1843'



U. S. Revenues



U. S. Rev., Official Registered, Seals



U. S. Revenues



U. S. Revenues



1940 Stock Transfer 1941



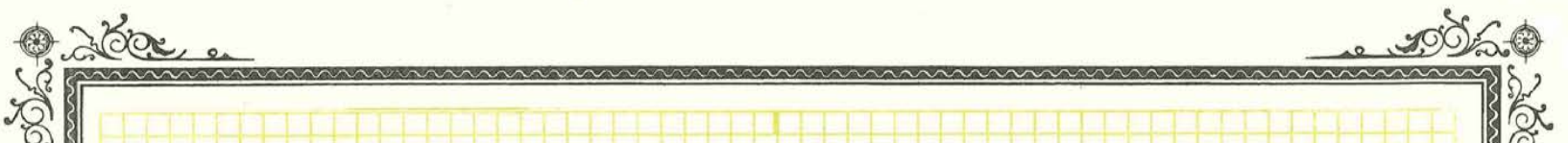
Proudly made in the U.S.A.

GS&K HOBBY PRODUCTS • 2121 Beale Ave, Allentown, PA 16601 •

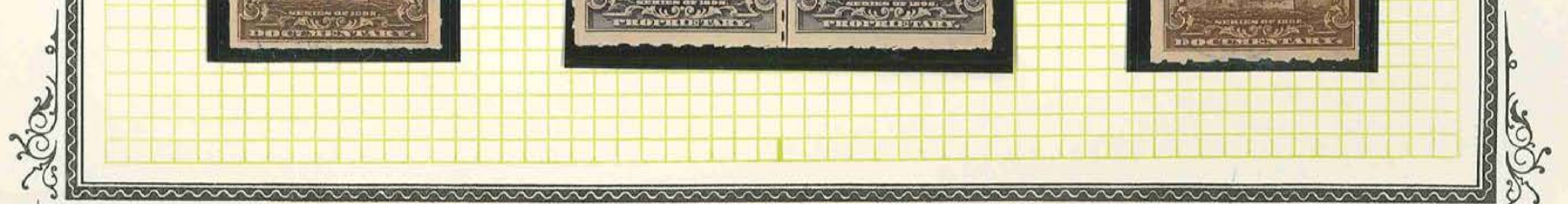
No. ZGSOQUARA

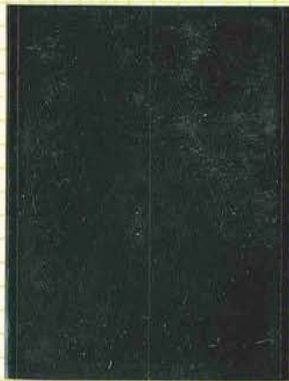
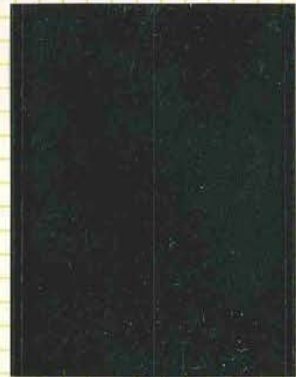






17





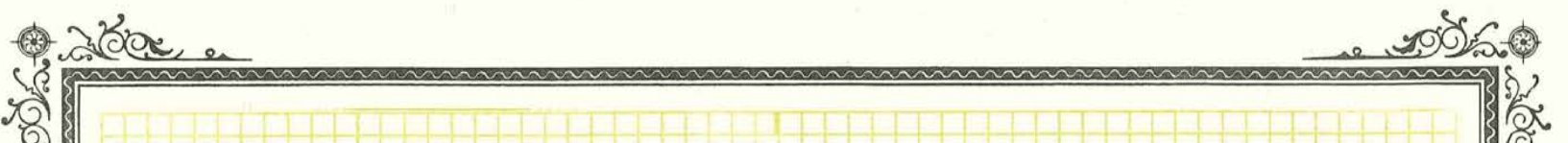


8

Proudly made in the U.S.A.

G&K HOBBY PRODUCTS • 2121 Beale Ave, Allentown, PA 16801 •

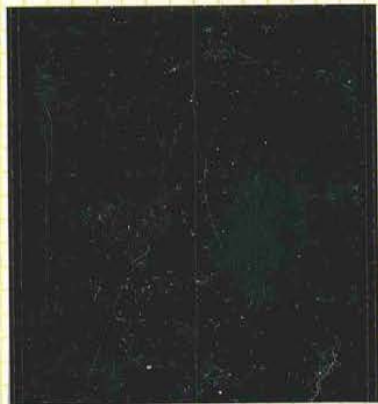
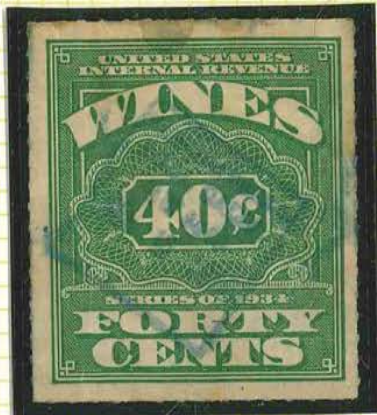
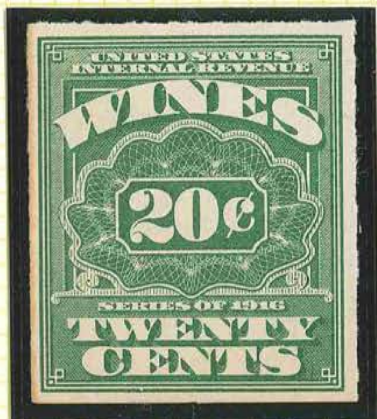
No ZGSQUARA



Proudly made in the U.S.A.

G&K HOBBY PRODUCTS • 2121 Beale Ave, Allentown, PA 16601 •

No ZG-SQUARA



15

State Revenues N.Y.





29

Stock U. S. Revenue Doc.



1947 Stock U.S. Revenues Trans. 1948



Proudly made in the U.S.A.

G&K HOBBY PRODUCTS • 2121 Beale Ave, Altoona, PA 16601 •

19 No ZG50UARA

1918 Stock U. S. Revenues Transfer 1929



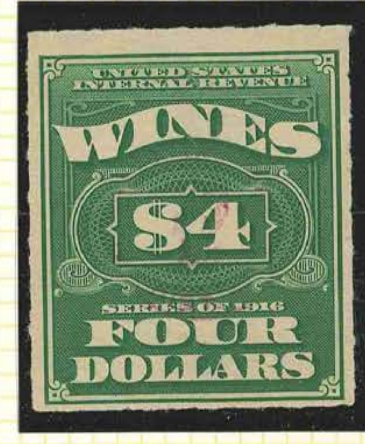
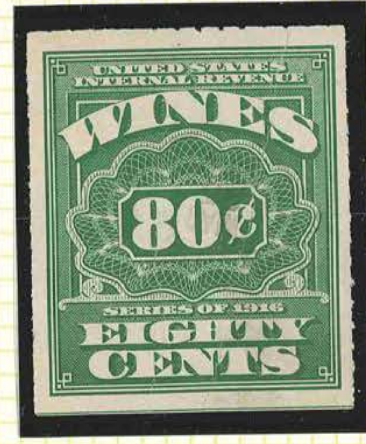
Doc. U. S. Revenue Cards



1942 Stock U. S. Revenue Transfer 1942



U. S. Revenues



U. S. Revenues



6.00

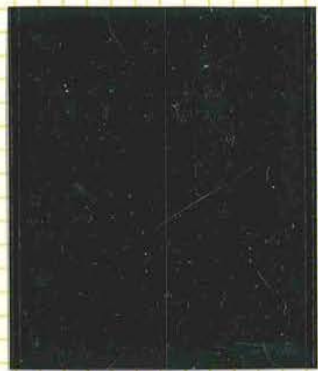


U. S. Revenues



ca. State

Misc. U.S. Revenues



U. S. Telegraph



Savings Stamps



Postal Note

1.95 per
PNS
PIU 11



U. S. Revenues



R59 Cracked Plate R59B



Potato Tax



RE-18 30-

Misc. U. S. Rev.



R1511



Misc. U.S. Rev.



\$1.00



Y 50





* Old

REVENUE

SILVER TAX STAMPS
1934

Watermarked **USIR**
Perforated 11

Documentary
Stamps of 1917
Overprinted like cut
1 C
CARMINE ROSE

4 C
CARMINE ROSE
(RG4)

\$1
GREEN
(RG13)

\$2
ROSE
(RG14)

\$3
VIOLET
(RG15)

\$4
YELLOW
BROWN
(RG16)

\$5
DARK BLUE
(RG17)

\$10
ORANGE
(RG18)

Perforated 12

\$30
VERMILION
(RG19)

\$60
BROWN
(RG20)

\$100
GREEN
(RG21)

\$500
BLUE
(RG22)

\$1000
ORANGE
(RG23)

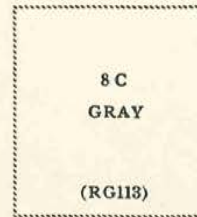
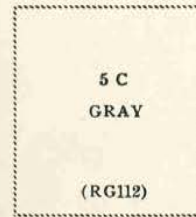
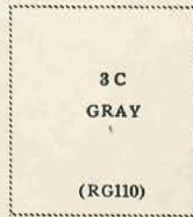
REVENUE

SILVER TAX STAMPS

1944

Watermarked **USIR**

Perforated 11



3 C
GRAY

(RG110)

5 C
GRAY

(RG112)

8 C
GRAY

(RG113)

10 C
GRAY

(RG114)

20 C
GRAY

(RG115)

25 C
GRAY

(RG116)

40 C
GRAY

(RG117)

50 C
GRAY

(RG118)

80 C
GRAY

(RG119)

\$1
GRAY

(RG120)

\$2
GRAY

(RG121)

\$3
GRAY

(RG122)

\$4
GRAY

(RG123)

\$5
GRAY

(RG124)



\$10
GRAY

(RG125)

\$20
GRAY

(RG126)

\$50
GRAY

(RG128)

\$60
GRAY

(RG129)

\$100
GRAY

(RG130)

\$500
GRAY

(RG131)

\$1000
GRAY

(RG132)

REVENUE

SILVER TAX STAMPS

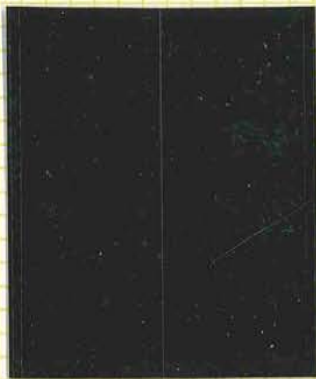
1941

Watermarked **USIR**

Perforated 11

<p>Similar to Stock Transfer Inscribed "Silver Tax" Overprinted like cut 1 C GRAY (RG58)</p>	<p>SERIES 1941 2 C GRAY (RG59)</p>	<p>3 C GRAY (RG60)</p>	<p>4 C GRAY (RG61)</p>	<p>5 C GRAY (RG62)</p>	<p>8 C GRAY (RG63)</p>
	<p>20 C GRAY (RG65)</p>	<p>25 C GRAY (RG66)</p>	<p>40 C GRAY (RG67)</p>	<p>50 C GRAY (RG68)</p>	<p>80 C GRAY (RG69)</p>
<p>\$1 GRAY (RG70)</p>	<p>\$2 GRAY (RG71)</p>	<p>\$3 GRAY (RG72)</p>	<p>\$4 GRAY (RG73)</p>	<p>\$5 GRAY (RG74)</p>	
<p>\$30 GRAY (RG77)</p>	<p>\$10 GRAY (RG75)</p>	<p>\$20 GRAY (RG76)</p>	<p>\$50 GRAY (RG78)</p>		
<p>\$80 GRAY (RG79)</p>	<p>\$100 GRAY (RG80)</p>	<p>\$500 GRAY (RG81)</p>	<p>\$1000 GRAY (RG82)</p>		

Misc. U. S. - State Revenues

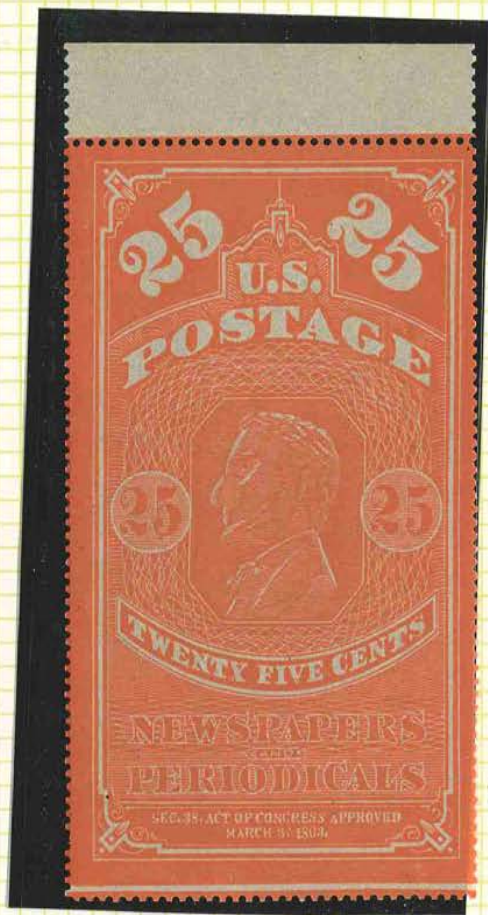
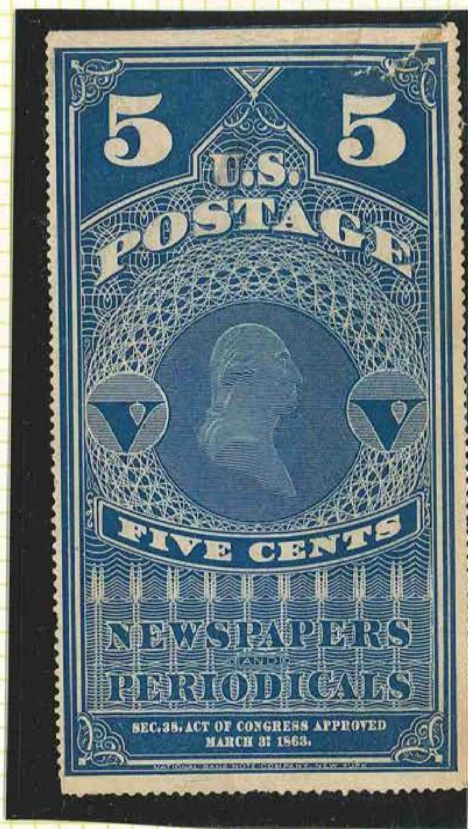


U. S. Proofs

CV 750.

CV 100.

SM. TEAR - THIN J



FAKE - NO -
NOTE BANK NOTE CO. NY
AT BOTTOM

PR 1

PR 7

Puerto Rico Rev.

