

UNITED STATES of AMERICA

AMERICAN RAPID TELEGRAPH COMPANY

Set up in 1879, this company had lines from New York to Boston and to Cleveland. Amalgamated with the Bankers and Merchants Telegraph Company in 1890 or 1891, then taken over by Western Union in 1894.

Collecting boxes (emptied every 15 minutes) were installed in New York and 'TELEGRAM' stamps were issued to the public for prepayment of messages.



As an alternative to prepayment, messages could be sent 'COLLECT' and appropriate stamps were produced vertically se-tenant with 'DUPLICATE' stamps of the same value.



When the company ceased to exist, all stocks of stamps were cancelled with a small punch hole, then sold to a New York dealer.

UNITED STATES of AMERICA

THE BALTIMORE and OHIO TELEGRAPH COMPANIES

CONNECTICUT RIVER TELEGRAPH COMPANY

This company entered into agreement with the B and O in 1885 and adopted similar design stamps with the addition of the words 'CONN' and 'River'



In 1887 the company extended it's line to New Boston Mass. New stamps, printed on blue paper, were introduced to cover the extension.



The Baltimore and Ohio companies as a whole did not show enough profit and all were absorbed by Western Union in 1887

UNITED STATES of AMERICA

Most of the United States telegraph stamps were issued in booklet form and will be found with one or more straight edges.

THE POSTAL-TELEGRAPH COMPANY

This pane of six is from a booklet issued in 1931



OFFICIAL FRANKS

The name or initials of the company for whose use they were issued are included in the design.



In 1943 the 'Postal' was absorbed by Western Union

UNITED STATES OF AMERICA

WESTERN UNION TELEGRAPH COMPANY

Established in 1856, throughout it's early history bought, or otherwise acquired, many smaller companies.

FRANK STAMPS

The first issue of the Frank Stamp was in 1871. A new issue of one or two stamps was made every year until 1946 when the use of frank stamps was discontinued.



UNITED STATES of AMERICA

WESTERN UNION TELEGRAPH COMPANY

Frank stamps



UNITED STATES of AMERICA

WESTERN UNION TELEGRAPH COMPANY

Frank stamps



UNITED STATES of AMERICA

WESTERN UNION TELEGRAPH COMPANY

Frank stamps



UNITED STATES of AMERICA

WESTERN UNION TELEGRAPH COMPANY

Frank stamps



UNITED STATES of AMERICA

WESTERN UNION TELEGRAPH COMPANY

Frank stamps



Since about 1910 Western Union has been controlled by the Bell Telephone Company.

UNITED STATES of AMERICA

WESTERN UNION TELEGRAPH COMPANY

PREPAYMENT STAMPS

In 1940 a series of five different value stamps were available for sale to the public for use in prepayment of telegraph services.



The idea was not successful and the stamps were withdrawn and have not been repeated.

# UNITED STATES of AMERICA

Government issued

## TELEGRAPH TAX STAMPS

Revenue tax stamps were first introduced in the USA in 1862. They were for use in the payment of the tax as specified on the face below the bust of George Washington.

In December of 1862 most revenue stamps were allowed by law to be used indiscriminately.

Manuscript cancel was normal



Tax on telegrams ceased on 1<sup>st</sup> August 1864

UNITED STATES of AMERICA

IN THE BEGINNING

*IN 1860 THE PONY EXPRESS WAS LAUNCHED TO COVER A 1,966-MILE ROUTE BETWEEN ST. JOSEPH, MISSOURI AND SACRAMENTO, CALIFORNIA IN TEN DAYS. THE SERVICE ENDED IN 1861 WHEN A TELEGRAPH LINE WAS ERECTED BETWEEN OMAHA AND CALIFORNIA*



Stamp Monthly September 1985

## WE KNOW!

**B**EFORE THE TELEGRAPH WIRE OR the railroad spanned the west, the Pony Express delivered the mail between St. Joseph, Missouri and Sacramento, California.

The Pony Express only lasted some 18 months between 1860 and 1861, but the legend of the daring young riders lives on. One advertisement for riders read:

### WANTED

YOUNG SKINNY WIRY FELLOWS NOT OVER EIGHTEEN. MUST BE EXPERT RIDERS WILLING TO RISK DEATH DAILY. ORPHANS PREFERRED. WAGES 25 DOLLARS A WEEK.

Pat Herst tells a story, though he says he cannot vouch for its truth.

The Pony Express riders would shout out as they saw people in townships any news

that they carried, just as the paper boys used to call out important news which their papers carried.

At the end of 1860, after Lincoln had been elected President, the Pony Express messenger rode through towns shouting "Lincoln's elected! Lincoln's elected!" It was news of national importance, for on the result of the election depended the whole of the nation's future. Lincoln's victory meant a policy which would cause the secession of the Southern States, and lead to the Civil War. The Pony Express riders recognised their importance as carriers of news. "Lincoln's elected! Lincoln's elected!" they cried. They did not know that, since last they galloped through the towns, the telegraph line had been connected.

"Lincoln's elected! Lincoln's Elected!" they cried. "WE KNOW", shouted back the townspeople.

Stamp Lover December 1987



UNITED STATES of AMERICA

CENTENARY of the TELEGRAPH

UNOFFICIAL COMMEMORATIVE MINIATURE SHEET

Wash. D. C.	The Telegraph 1844 — May 24th — 1944	Balti- more, Md.
The P. O. Department issued a 3c. stamp to commemorate this event on May 24th, 1944.		Approved by the National Poster Stamp Society, Chicago, Ill. Published by F. H. D.—Designed by L. W. S.
You Can Help.	Honoring the 100th Anniversary of the use of Telegraphic Service	Buy Bonds To-day.

Samuel Finley Breese Morse  
b. 27th April 1791  
d. 2nd April 1872

U.S. Post office issue  
Commemorative stamp  
of first telegraph message



# UNITED STATES

TELEGRAPH STAMPS

Western Union Telegraph Co.

1871-76



Without Date  
1872  
RED

1873  
BLUE

1874  
BROWN

Date at each side  
1875  
DEEP GREEN

1876  
RED

1877-82

1877  
VIOLET

1878  
GRAY BROWN

Like next cut  
1879  
BLUE

1880  
LILAC ROSE

1881  
GREEN



1883-88



1885  
GREEN



1889-94



1895-1900



# UNITED STATES

## TELEGRAPH STAMPS

### Western Union

1901-04



1905-08



1909-10



1911-13



1914



1915



1916



1917



1936



1937

1938



1939



1940

1941

1941



1942

1943

1944

1945

1946

UNITED STATES

TELEGRAPH STAMPS

Western Union

1918



UNITED STATES

TELEGRAPH STAMPS

American Rapid Telegraph Co.

1881



COLLECT STAMPS

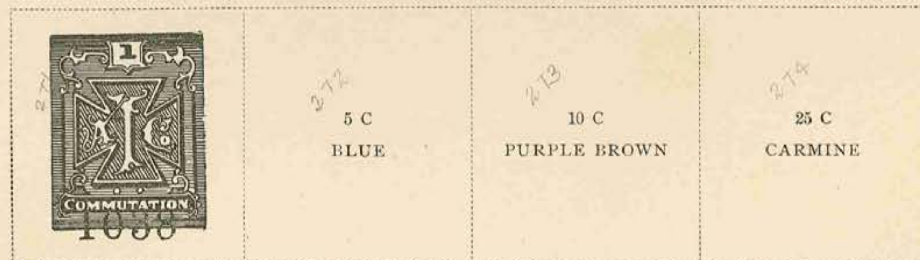


DUPLICATE STAMPS



Atlantic Telegraph Co.

1898



Baltimore & Ohio Telegraph Co.

1885

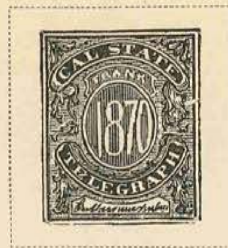


UNITED STATES

TELEGRAPH STAMPS

California State Telegraph Co.

1870



1871-75

	<p>1872 GREEN AND RED</p>	<p>1873 RED AND SALMON</p>	<p>1874 BLUE AND SALMON</p>	<p>1875 BROWN AND GREEN</p>
--	-----------------------------------	------------------------------------	-------------------------------------	-------------------------------------

City and Suburban Telegraph Co.

	<p>2 C BLACK</p>	<p>3 C BLACK</p>
--	----------------------	----------------------

Colusa Lake and Mendocino Telegraph Co.

1876

	<p>10 C BLACK</p>	<p>25 C RED</p>
--	-----------------------	---------------------

Commercial Union Telegraph Co.

1891

--	--	--

# UNITED STATES

## TELEGRAPH STAMPS

Mutual Union Telegraph Co.

1882-83



972  
CARMINE

North American Telegraph Co.

1899



Northern Mutual Telegraph Co.

1883



1894-5  
Northern New York  
Tel. Co.?  
1271-1274  
See 1891

Pacific Mutual Telegraph Co.

1883



Pacific Postal Telegraph-Cable Co.



15 C  
BLACK

25 C  
ROSE RED

40 C  
GREEN

50 C  
BLUE

# UNITED STATES

TELEGRAPH STAMPS,  
Postal Telegraph Co.

1885



1892-94



1894-96



1897-99



1900



1900

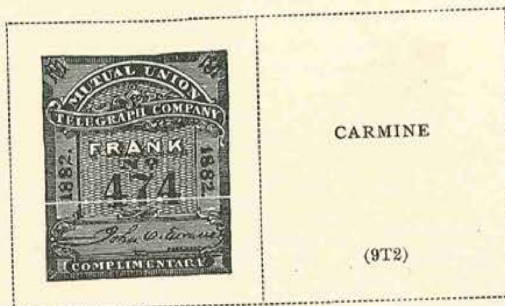


15701

# TELEGRAPH

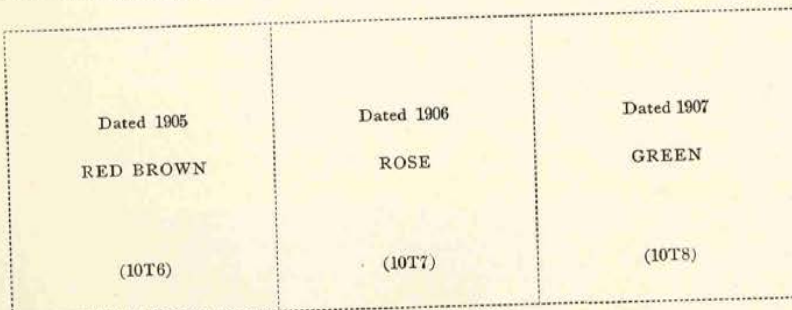
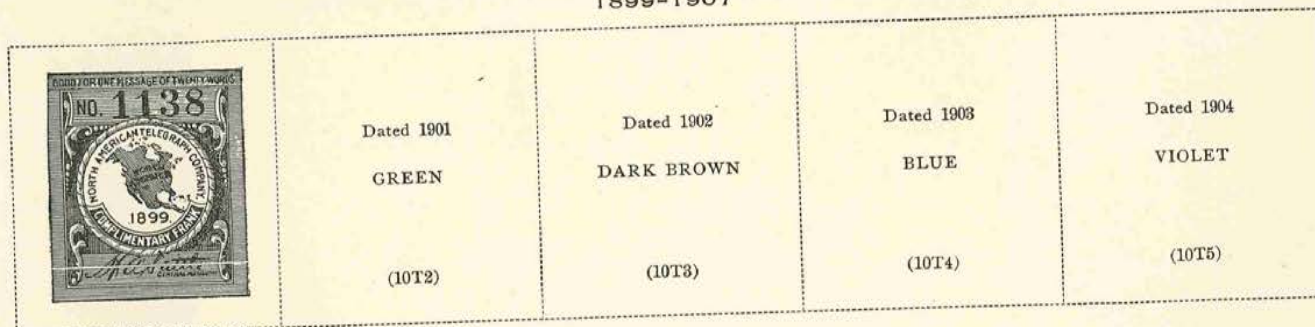
Mutual Union Telegraph Co.

1882-83



North American Telegraph Co.

1899-1907



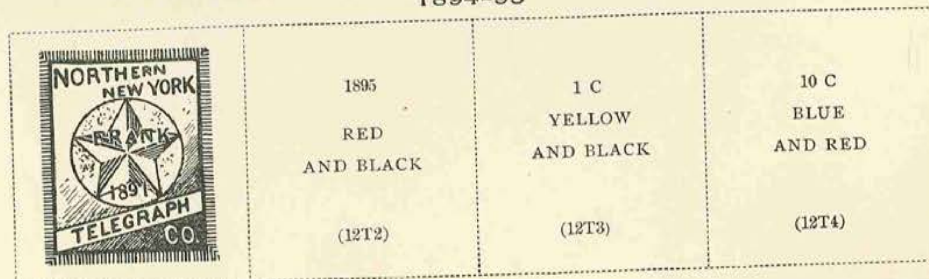
Northern Mutual Telegraph Co.

1883



Northern New York Telegraph Company

1894-95



133

~~WSP~~

1371

PACIFIC  
MUTUAL  
TELEGRAPH



Eric Jackson

[www.ericjackson.com](http://www.ericjackson.com)

# UNITED STATES

## TELEGRAPH STAMPS

### North American

1901-07

<p>Type of 1899 Dated 1901 GREEN</p> <p>15T2</p>	<p>Dated 1902 DARK BROWN</p>	<p>Dated 1903 BLUE</p>	<p>Dated 1904 VIOLET</p>	<p>Dated 1905 RED BROWN</p>
--	----------------------------------	----------------------------	------------------------------	---------------------------------

<p>Dated 1906 ROSE</p>	<p>Dated 1907 GREEN</p>
----------------------------	-----------------------------

### Postal Telegraph


1901-05

<p>15T21 15T024</p> 	<p>15T22</p> 	<p>Signature of Clarence H. Mackay Dated 1903 BLUE</p>	<p>15T23</p> <p>Dated 1904 BLUE ON BLUE</p>	<p>15T25</p> <p>Dated 1905 BLUE ON YELLOW</p>
---	--	--	---	---

1906

1907



<p>15T27</p> 	<p>15T28</p> <p>Dated 1907 BLUE ON PINK</p>
---	---

# TELEGRAPH

## Pacific Mutual Telegraph Co.

1883

	<p>1 C SLATE</p>		<p>10 C BLACK ON GREEN</p>	<p>25 C BLACK ON SALMON BUFF</p>
	(13T2)		(13T4)	(13T5)

## Pacific Postal Telegraph-Cable Co.

	<p>15 C BLACK</p>	<p>25 C ROSE RED</p>
	(14T2)	(14T3)

<p>40 C GREEN</p>	<p>50 C BLUE</p>
(14T4)	(14T5)

## Postal Telegraph Co.

1885



1892-94


	<p>1892 GRAY LILAC</p>	<p>1893 RED</p>	<p>1893 RED BROWN</p>	<p>1894 VIOLET BROWN</p>
	(15T6)	(15T7)	(15T8)	(15T9)




# TELEGRAPH

Western Union Telegraph Co.

1871-94

	Without Date (1872)	(1873)	(1874)	Like next cut Date at each side 1875	1876
	RED	BLUE	BROWN	DEEP GREEN	RED
	(16T2)	(16T3)	(16T4)	(16T5)	(16T6)

1877 VIOLET  (16T7)	1878 GRAY BROWN  (16T8)	1879 BLUE  (16T9)	1880 LILAC ROSE  (16T10)	1881 GREEN  (16T11)	1882 BLUE  (16T12)
------------------------------	----------------------------------	----------------------------	-----------------------------------	------------------------------	-----------------------------

	1884 GRAY VIOLET  (16T14)	1885 GREEN  (16T15)	1886 BROWN VIOLET  (16T16)	1887 RED BROWN  (16T17)	1888 BLUE  (16T18)
--	------------------------------------	------------------------------	-------------------------------------	----------------------------------	-----------------------------

1889 OLIVE GREEN  (16T19)	1890 PURPLE  (16T20)	1891 BROWN  (16T21)	1892 VERMILION  (16T22)	1893 BLUE  (16T23)	Signature of Thos. T. Eckert 1894 GREEN  (16T24)
------------------------------------	-------------------------------	------------------------------	----------------------------------	-----------------------------	---

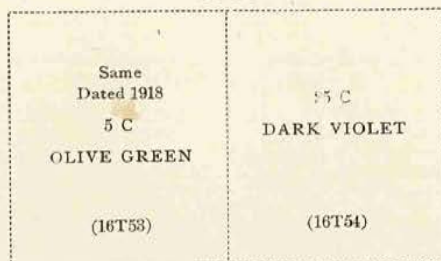
1895-1900

	1896 VIOLET  (16T26)	1897 ROSE RED  (16T27)		1899 OLIVE GREEN  (16T29)	1900 RED VIOLET  (16T30)
---	-------------------------------	---------------------------------	---	------------------------------------	-----------------------------------

# TELEGRAPH

## Western Union Telegraph Co. (Continued)

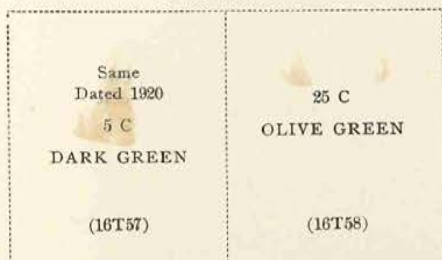
1918



1919



1920



1921



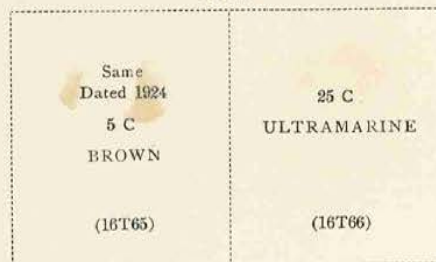
1922



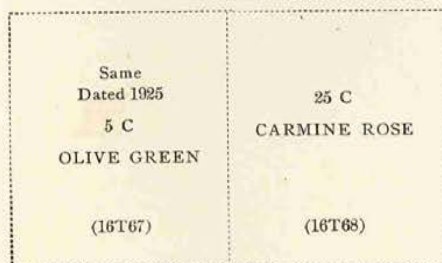
1923



1924



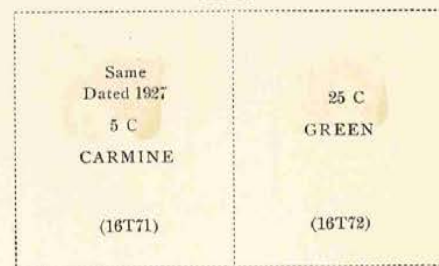
1925



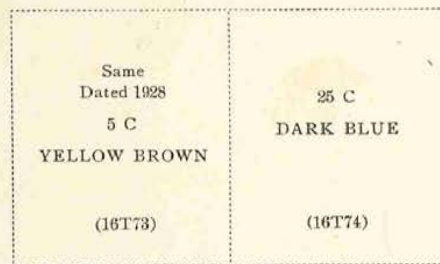
1926



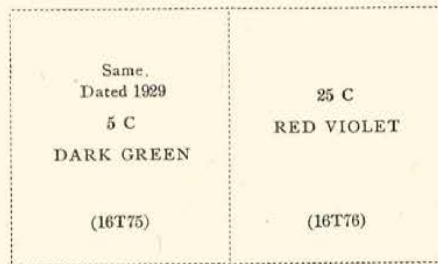
1927



1928



1929





# TELEGRAPH

## Western Union Telegraph Co. (Continued)

1930

Same Dated 1930 5 C OLIVE GREEN  (16T77)	25 C CARMINE  (16T78)
---	--------------------------------

1931



1932



1933



1934

Same Dated 1934 5 C LAKE  (16T85)	25 C DARK BLUE  (16T86)
--	----------------------------------

1935

Same Dated 1935 5 C YELLOW BROWN  (16T87)	25 C LAKE  (16T88)
--	-----------------------------

1936

Same Dated 1936 5 C BLUE  (16T89)	25 C APPLE GREEN  (16T90)
--	------------------------------------

1937

Same Dated 1937 5 C BISTRE BROWN  (16T91)	25 C CARMINE ROSE  (16T92)
--	-------------------------------------

1938

Same Dated 1938 5 C GREEN  (16T93)	
---	---



98  
109  
100

Advanced Revenue Collection  
#RE165A Wine Stamp  
Mystic Stamp Company  
Camden, NY 13316  
RT-13

372 ①



# TELEGRAPH

American Rapid Telegraph Co.

1881



## COLLECT STAMPS

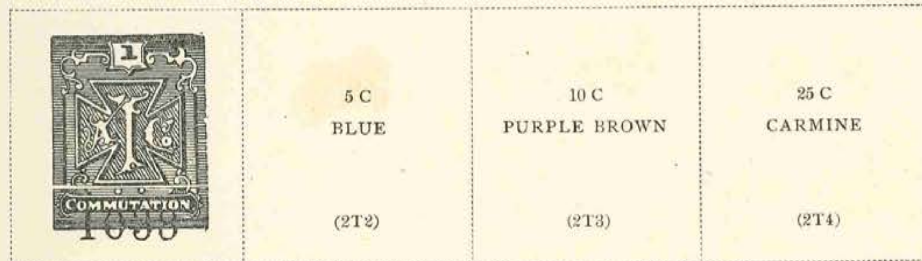


## OFFICE COUPON STAMPS



Atlantic Telegraph Co.

1888



Baltimore & Ohio Telegraph Co.

1885

